

General Electric Company

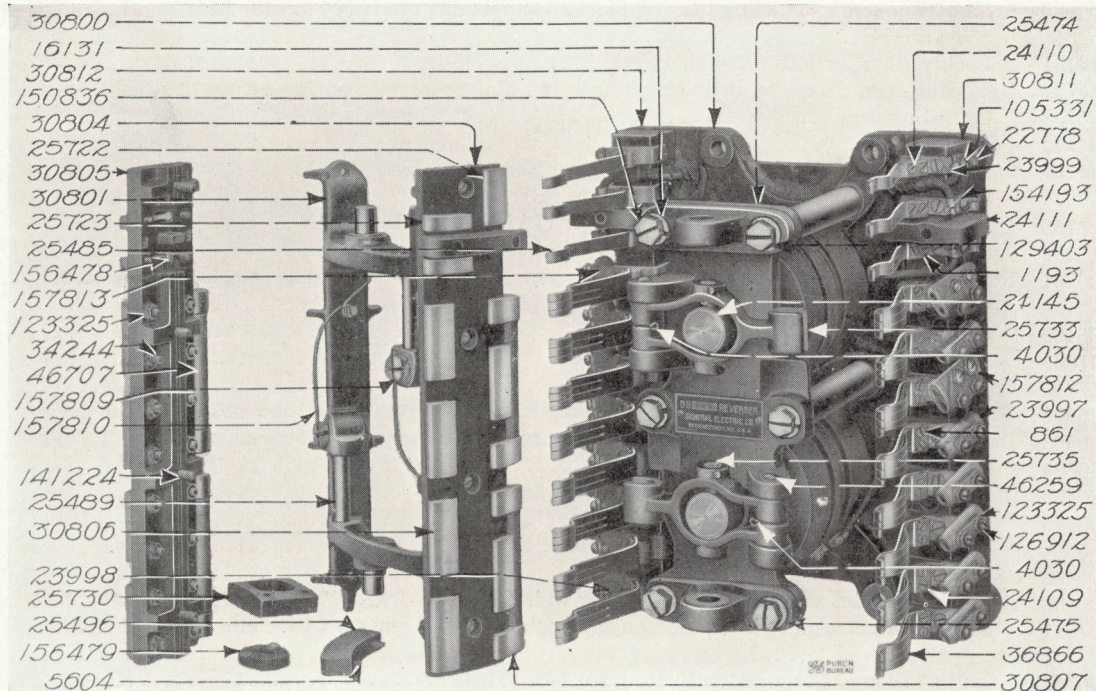
Schenectady, N.Y.

SUPPLY DEPARTMENT

July, 1914

*Bulletin No. 54733

PARTS OF TYPE DB-22, FORMS A, B C, D AND E REVERSERS



TYPE DB-22, FORM A REVERSER

NOTE.—All Type DB-22, Form A Reversers are identical with the exception of the operating magnet spool which are designated by spool numbers; these numbers follow the form letter in the name plate rating.

Cat. No.	Description
30426	OPERATING MAGNET SPOOL (No. 6), wound complete.....
30427	Operating magnet spool (No. 7), wound complete.....
34268	Operating magnet spool (No. 8), wound complete.....
40127	Operating magnet spool (No. 9), wound complete.....
40173	Operating magnet spool (No. 10), wound complete.....
40174	Operating magnet spool (No. 11), wound complete.....
40175	Operating magnet spool (No. 12), wound complete.....
40176	Operating magnet spool (No. 13), wound complete.....
40177	Operating magnet spool (No. 14), wound complete.....
40178	Operating magnet spool (No. 15), wound complete.....
40196	Operating magnet spool (No. 16), wound complete.....
47547	Operating magnet spool (No. 18), wound complete.....
47548	Operating magnet spool (No. 19), wound complete.....

NOTE.—The data in this publication are for the convenience of customers, and every effort is made to avoid error, but this Company does not guarantee their correctness, nor does it hold itself responsible for any errors or omissions in this publication. Subject to change without notice.

* Supersedes in part Bulletin No. 4592.

GENERAL ELECTRIC COMPANY

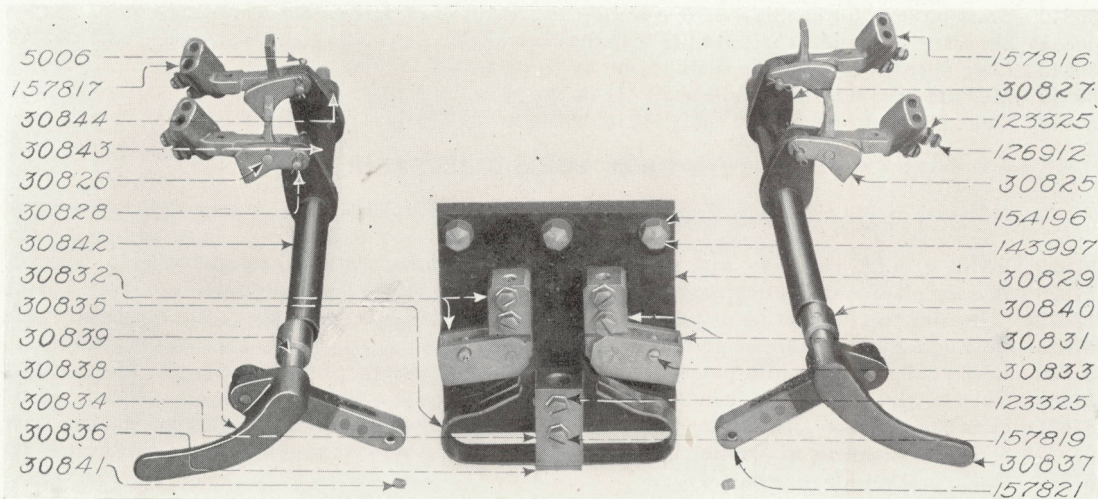
54733-2 Parts of Type DB-22, Forms A, B, C, D and E Reversers

Cat. No.	Description
22778	Copper terminal for magnet spool.....
105331	Screw fastening terminal in position (14-24, $\frac{3}{8}$ in. r. h. sherardized).....
154193	Spring lock washer for No. 105331 ($\frac{17}{64}$ in. by $\frac{29}{64}$ in. by $\frac{3}{64}$ in. thick).....
30800	Base plate, complete, with supporting studs for bearing plate and magnet poles.....
25474	Bearing plate with bearing caps, cap screws, lock washers and brass bushings.....
25475	Bearing cap for bearing plate.....
129403	Long cap screw fastening bearing caps and bearing plate to supporting studs ($\frac{1}{2}$ in.-13, $1\frac{1}{2}$ in. hex. h. slot. sherardized).....
150836	Short cap screw fastening bearing plate to supporting studs ($\frac{1}{2}$ in.-13, 1 in. hex. h. slot. sherardized).....
16131	Lock washer for Nos. 129403, 150836.....
25732	Operating arm, complete, includes plunger and hinge pins with spring cotters.....
25733	Operating arm.....
24145	Plunger.....
46259	Hinge pin for operating arm and bearing plate ($\frac{1}{2}$ in. by $2\frac{3}{4}$ in.).....
4030	Spring cotter for No. 46259 ($\frac{3}{8}$ in. by $\frac{5}{8}$ in.).....
25735	Hinge pin for operating arm and plunger ($\frac{1}{2}$ in. by $2\frac{7}{8}$ in.).....
15207	Spring cotter for No. 25735 ($\frac{1}{8}$ in. by $1\frac{1}{2}$ in.).....
30801	FRAME FOR SEGMENT BLOCKS, complete, includes bearing pins for plunger levers, adjustable stop pieces and bearing pivots with phosphor bronze washers.....
25489	Bearing pin with rivet.....
157809	Adjustable stop piece.....
157810	Locking spring for adjustable stop piece.....
30802	RIGHT-HAND SEGMENT BLOCK, complete, with segments and magnetic blowout device.....
30803	Left-hand segment block, complete, with segments and magnetic blowout device.....
30804	Segment block, right-hand.....
30805	Segment block, left-hand.....
25496	Insulation barrier for segment block.....
5604	Screw fastening No. 25496 to block (10-24, $1\frac{1}{4}$ in. r. h. brass).....
25498	Nut for No. 5604 (10-24, brass, sp'l).....
30806	Double contact segment with studs, for wide fingers.....
157811	Single contact segments for wide fingers, includes two segments with connection rod and insulation sleeve.....
30807	Single contact segment with stud, for No. 157811.....
30808	Connection rod for No. 157811 ($5\frac{1}{4}$ in. long).....
46707	Insulation sleeve for No. 30808.....
25722	Double contact segment for narrow fingers.....
25723	Single contact segment for narrow fingers.....
34244	Stud fastening Nos. 30806, 30807 to segment block (14-24, $1\frac{1}{16}$ in. brass).....
123325	Nut for No. 34244 (14-24, $\frac{3}{16}$ in. thick, $\frac{1}{2}$ in. across flats, hex. cham. one side, sherardized).....
154193	Spring lock washer for No. 34244 ($\frac{17}{64}$ in. by $\frac{29}{64}$ in. by $\frac{3}{64}$ in. thick).....
143960	Washer for No. 34244 ($\frac{17}{64}$ in. by $\frac{1}{2}$ in. by 0.034 in. sherardized).....
25726	Long screw fastening Nos. 25722, 25723 to segment block (10-24, $1\frac{1}{4}$ in. f. h. brass).....
1397	Short screw fastening Nos. 25722, 25723 to segment block (10-24, brass, sp'l).....
25498	Nut for short screw fastening No. 25722 to segment block (10-24, sp'l).....
156478	*Nut with contact spring, for short screw fastening No. 25723 to segment block (10-24, sp'l).....
156479	*Coil for magnetic blowout device.....
25730	Box for No. 156479.....
25731	Screw fastening No. 25730 to block (10-24, 1 in. f. h. brass).....
141224	Short screw fastening segment block to frame ($\frac{5}{16}$ in.-18, $1\frac{1}{4}$ in. r. h. sherardized).....
141223	Long screw fastening segment block to frame ($\frac{5}{16}$ in.-18, $1\frac{3}{4}$ in. r. h. sherardized).....
154196	Spring lock washer for Nos. 141224, 141223 ($\frac{21}{64}$ in. by $\frac{37}{64}$ in. by $\frac{5}{64}$ in. thick).....
133472	Washer for Nos. 141224, 141223 ($\frac{21}{64}$ in. by $\frac{5}{8}$ in. by 0.034 in. sherardized).....
30809	CONTACT BLOCK, right-hand, complete, without contact fingers.....

* A number of DB-22-A reversers are in use having blowout coils with brass nuts soldered to the leads. The reverser as now manufactured is fitted with blowout coils with copper contact plates, making contact with a segment screw nut with contact spring. Therefore, customers having reversers with the old style blowout coils and desiring new coils should order both the coil and the nuts with contact springs, catalog numbers 156478, 156479.

Parts of Type DB-22, Forms A, B, C, D and E Reversers 54733-3

Cat. No.	Description
30810	Contact block, left-hand, complete, without contact fingers.....
30811	Contact block, right-hand.....
30812	Contact block, left-hand.....
23997	Wide contact base, right-hand, with one cable hole.....
157812	Wide contact base, right-hand, with two cable holes.....
23998	Wide contact base, left-hand, with one cable hole.....
157813	Wide contact base, left-hand, with two cable holes.....
23999	Narrow contact base.....
30813	Screw fastening contact base to block (12-24, $\frac{5}{8}$ in. f. h.).....
22778	Copper terminal for No. 23999.....
105331	Screw fastening terminal to contact base (14-24, $\frac{3}{8}$ in. r. h. sherardized).....
154193	Spring lock washer for No. 105331 ($\frac{17}{64}$ in. by $\frac{29}{64}$ in. by $\frac{3}{64}$ in. thick).....
126912	Binding screw for wide contact base (14-24, $\frac{3}{4}$ in. r. h. sherardized).....
123325	Check nut for No. 126912 (14-24, $\frac{3}{16}$ in. thick, $\frac{1}{2}$ in. across flats, hex. cham. one side, sherardized)
141223	Screw fastening contact block to base plate ($\frac{5}{16}$ in. -18, $1\frac{3}{4}$ in. r. h. sherardized).....
154196	Spring lock washer for No. 141223 ($\frac{21}{64}$ in. by $\frac{37}{64}$ in. by $\frac{5}{64}$ in. thick).....
133472	Washer for No. 141223 ($\frac{21}{64}$ in. by $\frac{5}{8}$ in. by 0.034 in. sherardized).....
36866	WIDE REINFORCED CONTACT FINGER with shunt.....
25485	Narrow contact finger.....
	The DB-22-A reverser was originally fitted with wide reinforced contact fingers with stop and brass tip. This finger and parts are also listed as follows:.....
34258	Wide reinforced contact finger, complete, with spring, shunt and stop.....
34261	Support for No. 34258.....
33854	Adjusting screw for No. 34258 (14-24, 1 in. hex. h. slot. sp'1).....
34262	Locking spring for adjusting screw.....
2029	Screw fastening No. 34258 to contact base (8-32, $\frac{3}{4}$ in. f. h.).....
861	Screw fastening No. 36866 to contact base (8-32, $\frac{5}{8}$ in. f. h.).....
1193	Screw fastening No. 25485 to contact base (8-32, $\frac{1}{2}$ in. f. h.).....
24109	Double washer for No. 861.....
24110	Double washer for No. 1193.....
24111	Insulation barrier for narrow contact fingers.....
9933	Screw fastening barrier to contact block (No. 8, 2 in. r. h.).....



TYPE DB-22, FORM B REVERSER

Following are the parts of the Type DB-22, Form B reverser which differ from those of the Type DB-22, Form A:

30818	Base plate, complete, with supporting studs for bearing plate and magnet poles.....
30819	CONTACT BLOCK, right-hand, complete, without contact fingers.....

GENERAL ELECTRIC COMPANY

54733-4 Parts of Type DB-22, Forms A, B, C, D and E Reversers

Cat. No.	Description
30820	Contact block, left-hand, complete, without contact fingers.....
157814	Hinge contact base with two cable holes, complete, right-hand, for cutout switch.....
157815	Hinge contact base with two cable holes, complete, left-hand, for cutout switch.....
157816	Hinge contact base with two cable holes, stationary, right-hand.....
157817	Hinge contact base with two cable holes, stationary, left-hand.....
30825	Hinged contact base, movable.....
30826	Pin fastening movable contact base to stationary contact base ($\frac{1}{4}$ in. by $1\frac{1}{8}$ in. brass).....
30827	Eccentric for hinged contact base.....
30828	Pin fastening eccentric to contact base ($\frac{1}{4}$ in. by $1\frac{1}{2}$ in.).....
5006	Spring cotter for No. 30828 ($\frac{3}{8}$ in. by $\frac{1}{2}$ in.).....
157818	CUTOUT SWITCH, complete.....
30829	Insulation base for cutout switch.....
30831	Hinged contact and terminal, complete, right-hand.....
30832	Hinged contact and terminal, complete, left-hand.....
30833	Pivot screw for hinged contact and handle link (12-24, 1 in. headless, sp'l).....
30834	Terminal contact block, complete.....
157819	Binding screw for Nos. 30831, 30832, 30834 (14-24, $\frac{5}{8}$ in. hex. h. slot. sherardized, cap screw) ..
123325	Check nut for binding screw (14-24, $\frac{3}{16}$ in. thick, $\frac{1}{2}$ in. across flats, hex. cham. one side, sherardized).....
128612	Screw fastening Nos. 30831, 30832, 30834 to insulation base (14-24, 1 in. r. h. sherardized)....
154193	Spring lock washer for No. 128612 ($\frac{17}{64}$ in. by $\frac{29}{64}$ in. by $\frac{3}{64}$ in. thick).....
30835	Phosphor bronze contact spring.....
1193	Screw fastening No. 30835 to terminal contact block (8-32, $\frac{1}{2}$ in. f. h.).....
30836	Washer plate for No. 1193.....
143997	Cap screw fastening cutout switch to base plate ($\frac{3}{8}$ in.-16, $1\frac{1}{4}$ in. hex. h. slot. sherardized).....
154196	Spring lock washer for No. 143997 ($\frac{31}{64}$ in. by $\frac{37}{64}$ in. by $\frac{5}{64}$ in. thick).....
133472	Washer for No. 143997 ($\frac{21}{64}$ in. by $\frac{5}{8}$ in. by 0.034 in. sherardized).....
30837	Switch handle, complete, with link and rivet, right-hand.....
30838	Switch handle, complete, with link and rivet, left-hand.....
157821	Link for switch handle.....
157822	Pivot pin for switch handle and link.....
30839	Handle shaft.....
30840	Brass bushing for handle shaft.....
30841	Set screw for handle shaft (14-24, $\frac{5}{16}$ in. headless, sp'l).....
30842	Long fiber tube for handle shaft ($\frac{3}{4}$ in. by $\frac{7}{8}$ in. by $5\frac{15}{16}$ in. long).....
30843	Medium fiber tube for handle shaft ($\frac{3}{4}$ in. by $\frac{7}{8}$ in. by 4 in. long).....
30844	Short fiber tube for handle shaft ($\frac{3}{4}$ in. by $\frac{7}{8}$ in. by $1\frac{1}{8}$ in. long).....

TYPE DB-22, FORM C REVERSER

Following are the parts of the Type DB-22, Form C reverser which differ from those of the Type DB-22, Form A:

157825	BASE PLATE, complete, with supporting studs for bearing plate and magnet poles.....
157826	Bearing plate with bearing caps, cap screws, lock washers and brass bushings.....
157827	Bearing cap for bearing plate, tripping lever end.....
157828	Bearing for segment frame and hinge pin tripping levers.....
157829	Inside tripping lever with pin, for hand reversing mechanism.....
157830	Outside tripping lever for hand reversing mechanism.....
157831	Slide bar, complete, with spring bracket and inside pivot pin, for hand reversing mechanism.....
157832	Slide bar, complete, with spring bracket and outside pivot pin, for hand reversing mechanism.....
157833	Guide bracket for slide bars.....
110657	Screw fastening guide bracket to base plate (14-24, 1 in. f. h. blued).....
157834	Tension spring for slide bars.....
30819	CONTACT BLOCK, right-hand, complete, without contact fingers.....
30820	Contact block, left-hand, complete, without contact fingers.....
157814	Hinge contact base with two cable holes, complete, right-hand, for cutout switch.....
157815	Hinge contact base with two cable holes, complete, left-hand, for cutout switch.....

GENERAL ELECTRIC COMPANY

Parts of Type DB-22, Forms A, B, C, D and E Reversers 54733-5

Cat. No.	Description
157816	Hinge contact base with two cable holes, stationary, right-hand.....
157817	Hinge contact base with two cable holes, stationary, left-hand.....
30825	Hinged contact base, movable.....
30826	Pin fastening movable contact base to stationary contact base ($\frac{1}{4}$ in. by $1\frac{1}{8}$ in. brass).....
30827	Eccentric for hinged contact base.....
30828	Pin fastening eccentric to contact base ($\frac{1}{4}$ in. by $1\frac{1}{2}$ in.).....
5006	Spring cotter for No. 30828 ($\frac{3}{32}$ in. by $\frac{1}{2}$ in.).....
157818	CUTOUT SWITCH, complete.....
30829	Insulation base for cutout switch.....
30831	Hinged contact and terminal, complete, right-hand.....
30832	Hinged contact and terminal, complete, left-hand.....
30833	Pivot screw for hinged contact and handle link (12-24, 1 in. headless, sp'l).....
30834	Terminal contact block, complete.....
157819	Binding screw for Nos. 30831, 30832, 30834 (14-24, $\frac{5}{8}$ in. hex. h. slot. sherardized, cap screw)..
123325	Check nut for binding screw (14-24, $\frac{3}{16}$ in. thick, $\frac{1}{2}$ in. across flats, hex. cham. one side, sherardized).....
128612	Screw fastening Nos. 30831, 30832, 30834 to insulation base (14-24, 1 in. r. h. sherardized)....
154193	Spring lock washer for No. 128612 ($\frac{17}{64}$ in. by $\frac{29}{64}$ in. by $\frac{3}{64}$ in. thick).....
30835	Phosphor bronze contact spring.....
1193	Screw fastening No. 30835 to terminal contact block (8-32, $\frac{1}{2}$ in. f. h.).....
30836	Washer plate for No. 1193.....
143997	Cap screw fastening cutout switch to base plate ($\frac{3}{8}$ in.-16, $1\frac{1}{4}$ in. hex. h. slot. sherardized).....
154196	Spring lock washer for No. 143997 ($\frac{21}{64}$ in. by $\frac{37}{64}$ in. by $\frac{5}{64}$ in. thick).....
133472	Washer for No. 143997 ($\frac{21}{64}$ in. by $\frac{5}{8}$ in. by 0.034 in. sherardized).....
30837	Switch handle, complete, with link and rivet, right-hand.....
30838	Switch handle, complete, with link and rivet, left-hand.....
157821	Link for switch handle.....
157822	Pivot pin for switch handle and link.....
30839	Handle shaft.....
30840	Brass bushing for handle shaft.....
30841	Set screw for handle shaft (14-24, $\frac{5}{16}$ in. headless, sp'l).....
30842	Long fiber tube for handle shaft ($\frac{3}{4}$ in. by $\frac{7}{8}$ in. by $5\frac{15}{16}$ in. long).....
30843	Medium fiber tube for handle shaft ($\frac{3}{4}$ in. by $\frac{7}{8}$ in. by 4 in. long).....
30844	Short fiber tube for handle shaft ($\frac{3}{4}$ in. by $\frac{7}{8}$ in. by $1\frac{1}{8}$ in. long).....

TYPE DB-22, FORM D REVERSER

Following are the parts of the Type DB-22, Form D reverser which differ from those of the Type DB-22, Form A:

30818	BASE PLATE, complete, with supporting studs for bearing plate and magnet poles.....
157835	Bearing plate with bearing caps, cap screws, lock washers and brass bushings.....
157836	Bearing cap for bearing plate and support for relay.....
30819	CONTACT BLOCK, right-hand, complete, without contact fingers.....
157837	Contact block, left-hand, complete, without contact fingers.....
157838	Wide contact base, complete, with terminal base, lower end, for No. 157837.....
157839	Contact base for No. 157838.....
157840	Terminal base for No. 157838.....
157841	Insulation plate between contact base and terminal base, for No. 157838.....
157842	Rivet for contact base and terminal base ($\frac{3}{16}$ in. by $\frac{13}{16}$ in. r. h.).....
157843	Double washer for rivets (brass).....
157844	Double insulating washer for rivets (fiber).....
157845	Fiber sleeve for rivet ($\frac{3}{16}$ in. by $\frac{5}{16}$ in. by $\frac{3}{8}$ in. long).....
157818	CUTOUT SWITCH, complete.....
30829	Insulation base for cutout switch.....
30831	Hinged contact and terminal, complete, right-hand.....
30832	Hinged contact and terminal, complete, left-hand.....

GENERAL ELECTRIC COMPANY

54733-6 Parts of Type DB-22, Forms A, B, C, D and E Reversers

Cat. No.	Description
30833	Pivot screw for hinged contact and handle link (12-24, 1 in. headless, sp'l)
30834	Terminal contact block, complete
157819	Binding screw for Nos. 30831, 30832, 30834 (14-24, $\frac{5}{8}$ in. hex. h. slot. sherardized, cap screw)
123325	Check nut for binding screw (14-24, $\frac{3}{16}$ in. thick, $\frac{1}{2}$ in. across flats, hex. cham. one side sherardized)
128612	Screw fastening Nos. 30831, 30832, 30834 to insulation base (14-24, 1 in. r. h. sherardized)
154193	Spring lock washer for No. 128612 ($\frac{17}{64}$ in. by $\frac{29}{64}$ in. by $\frac{3}{64}$ in. thick)
30835	Phosphor bronze contact spring
1193	Screw fastening No. 30835 to terminal block (8-32, $\frac{1}{2}$ in. f. h.)
30836	Washer plate for No. 1193
143997	Cap screw fastening cutout switch to base plate ($\frac{3}{8}$ in.-16, $1\frac{1}{4}$ in. hex. h. slot. sherardized)
154196	Spring lock washer for No. 143997 ($\frac{21}{64}$ in. by $\frac{37}{64}$ in. by $\frac{5}{64}$ in. thick)
133472	Washer for No. 143997 ($\frac{21}{64}$ in. by $\frac{5}{8}$ in. by 0.034 in. sherardized)
30837	Switch handle, complete, with link and rivet, right-hand
30838	Switch handle, complete, with link and rivet, left-hand
157821	Link for switch handle
157822	Pivot pin for switch handle and link
30839	Handle shaft
30840	Brass bushing for handle shaft
30841	Set screw for handle shaft (14-24, $\frac{5}{16}$ in. headless, sp'l)
30842	Long fiber tube for handle shaft ($\frac{3}{4}$ in. by $\frac{7}{8}$ in. by $5\frac{1}{8}$ in. long)
30843	Medium fiber tube for handle shaft ($\frac{3}{4}$ in. by $\frac{7}{8}$ in. by 4 in. long)
30844	Short fiber tube for handle shaft ($\frac{3}{4}$ in. by $\frac{7}{8}$ in. by $1\frac{1}{8}$ in. long)

TYPE DB-22, FORM E REVERSER

Following are the parts of the Type DB-22, Form E reverser which differ from those of the Type DB-22, Form A:

30818	BASE PLATE, complete, with supporting studs for bearing plate and magnet poles
157835	Bearing plate with bearing caps, cap screws, lock washers and brass bushings
157836	Bearing cap for bearing plate and support for relay
30819	CONTACT BLOCK, right-hand, complete, without contact fingers
30820	Contact block, left-hand, complete, without contact fingers
157814	Hinge contact base with two cable holes, complete, right-hand, for cutout switch
157815	Hinge contact base with two cable holes, complete, left-hand, for cutout switch
157816	Hinge contact base with two cable holes, stationary, right-hand
157817	Hinge contact base with two cable holes, stationary, left-hand
30825	Hinged contact base, movable
30826	Pin fastening movable contact base to stationary contact base ($\frac{1}{4}$ in. by $1\frac{1}{8}$ in. brass)
30827	Eccentric for hinged contact base
30828	Pin fastening eccentric to contact base ($\frac{1}{4}$ in. by $1\frac{1}{2}$ in.)
5006	Spring cotter for No. 30828 ($\frac{3}{2}$ in. by $\frac{1}{2}$ in.)
157818	CUTOUT SWITCH, complete
30829	Insulation base for cutout switch
30831	Hinged contact and terminal, complete, right-hand
30832	Hinged contact and terminal, complete, left-hand
30833	Pivot screw for hinged contact and handle link (12-24, 1 in. headless, sp'l)
30834	Terminal contact block, complete
157819	Binding screw for Nos. 30831, 30832, 30834 (14-24, $\frac{5}{8}$ in. hex. h. slot. sherardized, cap screw)
123325	Check nut for binding screw (14-24, $\frac{3}{16}$ in. thick, $\frac{1}{2}$ in. across flats, hex. cham. one side, sherardized)
128612	Screw fastening Nos. 30831, 30832, 30834 to insulation base (14-24, 1 in. r. h. sherardized)
154193	Spring lock washer for No. 128612 ($\frac{17}{64}$ in. by $\frac{29}{64}$ in. by $\frac{3}{64}$ in. thick)
30835	Phosphor bronze contact spring
1193	Screw fastening No. 30835 to terminal block (8-32, $\frac{1}{2}$ in. f. h.)
30836	Washer plate for No. 1193

GENERAL ELECTRIC COMPANY

Parts of Type DB-22, Forms A, B, C, D and E Reversers 54733-7

Cat. No.	Description
143997	Cap screw fastening cutout switch to base plate ($\frac{3}{8}$ in.-16, $1\frac{1}{4}$ in. hex. h. slot. sherardized).....
154196	Spring lock washer for No. 143997 ($\frac{21}{64}$ in. by $\frac{37}{64}$ in. by $\frac{5}{64}$ in. thick).....
133472	Washer for No. 143997 ($\frac{21}{64}$ in. by $\frac{5}{8}$ in. by 0.034 in. sherardized).....
157846	Switch handle, complete, with link and rivet, right-hand.....
157847	Switch handle, complete, with link and rivet, left-hand.....
157821	Link for switch handle.....
157848	Pivot pin for switch handle and link.....
30839	Handle shaft.....
30840	Brass bushing for handle shaft.....
30841	Set screw for handle shaft (14-24, $\frac{5}{16}$ in. headless, sp'l).....
30842	Long fiber tube for handle shaft ($\frac{3}{4}$ in. by $\frac{7}{8}$ in. by $5\frac{15}{16}$ in. long).....
30843	Medium fiber tube for handle shaft ($\frac{3}{4}$ in. by $\frac{7}{8}$ in. by 4 in. long).....
30844	Short fiber tube for handle shaft ($\frac{3}{4}$ in. by $\frac{7}{8}$ in. by $1\frac{5}{8}$ in. long).....

INDEX TO CATALOGUE NUMBERS

CAT. NO.	PAGE	CAT. NO.	PAGE	CAT. NO.	PAGE	CAT. NO.	PAGE	CAT. NO.	PAGE	CAT. NO.	PAGE
861-3	25489-2	30808-2	30838-4-6	40196-1	157809-2	157833-4					
1193-3-6	25496-2	30809-2	30839-4-7	46259-2	157810-2	157834-4					
1397-2	25498-2	30810-3	30840-4-7	46707-2	157811-2	157835-5, 6					
2029-3	25722-2	30811-3	30841-4-7	47547-1	157812-3	157836-5, 6					
4030-2	25723-2	30812-3	30842-4-7	47548-1	157813-3	157837-5					
5006-46	25726-2	30813-3	30843-4-7	105331-2, 3	157814-4, 6	157838-5					
5604-2	25730-2	30818-3, 5, 6	30844-4-7	110657-4	157815-4, 6	157839-5					
9933-3	25731-2	30819-3-6	33854-3	123325-2-6	157816-4-6	157840-5					
15207-2	25732-2	30820-4, 6	34244-2	126912-3	157817-4-6	157841-5					
16131-2	25733-2	30825-4-6	34258-3	128612-4-6	157818-4-6	157842-5					
22778-2, 3	25735-2	30826-4-6	34261-3	129403-2	157819-4-6	157843-5					
23997-3	30426-1	30827-4-6	34262-3	133472-2-7	157821-4-7	157844-5					
23998-3	30427-1	30828-4-6	34268-1	141223-2, 3	157822-4-6	157845-5					
23999-3	30800-2	30829-4-6	36866-3	141224-2	157825-4	157846-7					
24109-3	30801-2	30831-4-6	40127-1	143960-2	157826-4	157847-7					
24110-3	30802-2	30832-4-6	40173-1	143997-4-7	157827-4	157848-7					
24111-3	30803-2	30833-4-6	40174-1	150836-2	157828-4						
24145-2	30804-2	30834-4-6	40175-1	154193-2-6	157829-4						
25474-2	30805-2	30835-4-6	40176-1	154196-2-7	157830-4						
25475-2	30806-2	30836-4-6	40177-1	156478-2	157831-4						
25485-3	30807-2	30837-4-6	40178-1	156479-2	157832-4						

GENERAL ELECTRIC COMPANY

PRINCIPAL OFFICES, SCHENECTADY, N. Y.

SALES OFFICES
(Address nearest office)

Atlanta, Ga.	Third National Bank Building
Baltimore, Md.	Electrical Building
Birmingham, Ala.	Brown-Marx Building
Boise, Idaho	Idaho Building
Boston, Mass.	84 State Street
Buffalo, N. Y.	Electric Building
Butte, Mont.	Electric Building
Charleston, W. Va.	Charleston National Bank Building
Charlotte, N. C.	Commercial National Bank Building
Chattanooga, Tenn.	James Building
Chicago, Ill.	Monadnock Building
Cincinnati, Ohio	Provident Bank Building
Cleveland, Ohio	The Illuminating Building
Columbus, Ohio	Columbus Savings & Trust Building
Dayton, Ohio	Schwind Building
Denver, Colo.	First National Bank Building
Des Moines, Iowa	The Hippee-Polk Building
Detroit, Mich.	Dime Savings Bank Bldg. (Office of Soliciting Agent)
Elmira, N. Y.	Hulett Building
Erie, Pa.	Marine National Bank Building
Fort Wayne, Ind.	Fort Wayne Electric Works
Hartford, Conn.	Hartford National Bank Building
Indianapolis, Ind.	Traction Terminal Building
Jacksonville, Fla.	Heard National Bank Building
Joplin, Mo.	Miners' Bank Building
Kansas City, Mo.	Dwight Building
Knoxville, Tenn.	Bank & Trust Building
Los Angeles, Cal.	124 West Fourth Street
Louisville, Ky.	Starks Building
Memphis, Tenn.	Randolph Building
Milwaukee, Wis.	Public Service Building
Minneapolis, Minn.	410 Third Ave., North
Nashville, Tenn.	Stahlman Building
New Haven, Conn.	Second National Bank Building
New Orleans, La.	Maison-Blanche Building
New York, N. Y.	30 Church Street
Niagara Falls, N. Y.	Gluck Building
Omaha, Neb.	Union Pacific Building
Philadelphia, Pa.	Witherspoon Building
Pittsburg, Pa.	Oliver Building
Portland, Ore.	Electric Building
Providence, R. I.	Turks Head Building
Richmond, Va.	Virginia Railway & Power Building
Rochester, N. Y.	Granite Building
St. Louis, Mo.	Pierce Building
Salt Lake City, Utah	Newhouse Building
San Francisco, Cal.	Rialto Building
Seattle, Wash.	Colman Building
Spokane, Wash.	Paulsen Building
Springfield, Mass.	Massachusetts Mutual Building
Syracuse, N. Y.	Onondaga County Savings Bank Building
Toledo, Ohio	Spitzer Building
Washington, D. C.	Evans Building
Youngstown, Ohio	Wick Building

For TEXAS, OKLAHOMA and ARIZONA Business refer to
Southwest General Electric Co. (Formerly Hobson Electric Co.)
Dallas, Tex. 1701 N. Market Street
El Paso, Tex. 500-2 San Francisco Street
Houston, Tex. Third and Washington Streets
Oklahoma City, Okla. Insurance Building

Motor Agencies in all large cities and towns.

FOREIGN SALES OFFICES { Schenectady, N. Y., Foreign Dept.
New York, N. Y., 30 Church Street
London, E. C., England, 83 Cannon Street

For all CANADIAN Business refer to
Canadian General Electric Co., Ltd., Toronto, Ont.